

The Alliance High School Performing Arts Center Specs

Location: 1405 Box Butte Ave., Alliance NE 69301
 Mailing Address: Alliance Public Schools
 RE: Performing Arts Center
 1604 Sweetwater, Alliance NE 69301

Main Administrative Phone: 308-762-5475
 Main Administrative Fax: 308-762-8249

Superintendent Dan Hoelsing 308-762-5475
 Stage Manager Earl Jones 308-762-5475
 Activities Dir. Tim Wallace 308-762-3359

Rigging System:

Type: T-bar counterweight
 Weight: 43,703 lbs available
 Line sets: 16 open line sets, 33 sets total
 – coordinate with High School - All lines operated SL
 Arbors:
 4' = 782 lbs capacity
 7' = 1,565 lbs capacity
 9' = 2,086 lbs capacity
 House Pipes: 76'-0" with 35' travel
 Line sets are not movable
 Loading Gallery: + 38'-6" SL

Permanent Installations / Curtains:

Lighting Catwalk: (-36'-6") + 31'-6" above stage floor
 Projection Screen: down stage of Grand Valance (-6")
 Grand Valance: (0'-8") Ink Blue Velour
 Grand Drape: traveler or guillotine from SL (1'-2")
 Ink Blue velour
 Electrics -4 total: (3'-2") (11'-2") (21'-2") (29'-2")
 Legs – 3 pair total (10' straight + 6' pivot on 24' track):
 (5'-2") (13'-2") (27'-2") Black Velour
 Borders – 4 total: (7'-2") (14'-6") (25'-2") (33'-8")
 Black velour
 Speaker Curtain: traveler or guillotine from SL (7'-10")
 Black velour
 Mid-stage Curtain: traveler or guillotine from SL (19'-2")
 Black velour
 Scrim: Lt. Grey (25'-10")
 Rear Curtain: traveler or guillotine from SL (35'-8")
 Black velour
 Cyclorama: white (36'-6")
 Open Line Sets: (1'-10") (6'-6") (8'-6") (9'-2") (15'-2")
 (15'-10") (17'-2") (18'-6") (23'-2") (23'-10")
 (24'-6") (31'-2") (31'-10") (34'-4") (35'-0")

Orchestra Pit:

None

Flooring:

Stage Floor: Double Tempered Fully Painted Masonite
 Apron Floor: Stained Hardwood Maple
 Wing Floor: Concrete

Loading Dock:

Two (2) bays with height adjuster 48" dock
 One (1) 8'-6" W x 10'-0" T dock door
 Interior scene shop to stage overhead doors
 8'-6" W x 14'-0" T

Seating Capacity:
 753 + 8 wheelchair

Dressing Rooms: (All multi-use spaces)

Coordinate needs with HS.
 Two way Communication & stage monitor at
 Scene Shop, Band & Music.
 2 locker rooms with showers, toilets and stage
 audio feed. Located below Gym Stage

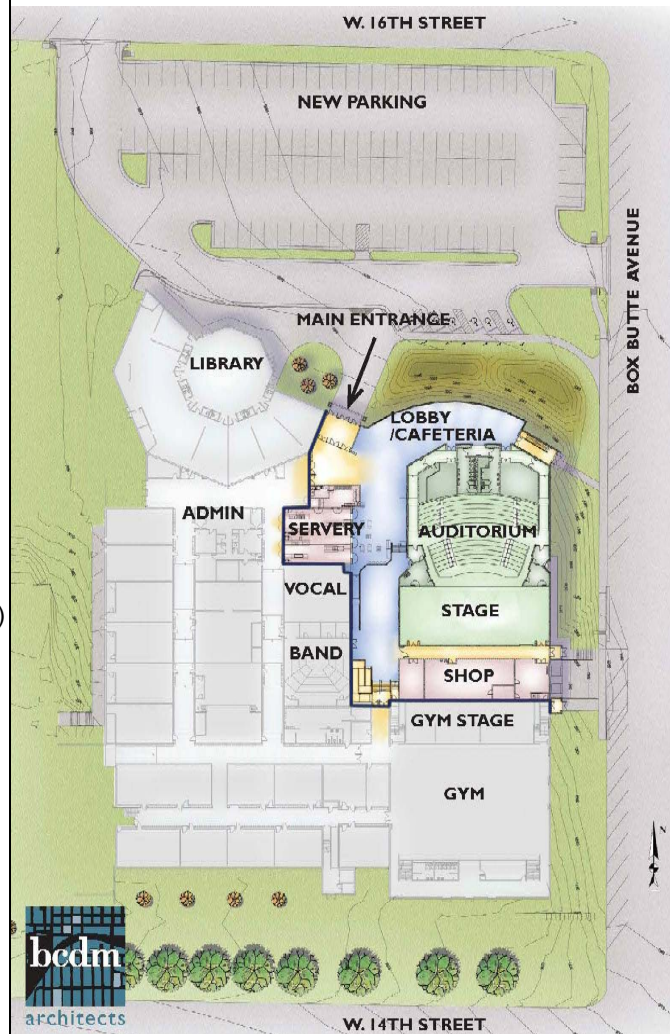
Wardrobe:

Coordinate needs with HS.

Rehearsal & Storage:

Coordinate needs with HS.
 Adjacent Gym Stage (25' x 86')
 Piano available
 Scene Shop (61' x 27')
 Shop Staging (23' x 23')

Orientation Plan:



The Alliance High School Performing Arts Center Specs

Electronics:

Lighting

Stage and hang position electricals wired with grounded pin stage connectors.

Light Board: ETC Element Control Console

Dimmers: ETC: 142-2.4kW dimmers

Company Switch: 3-phase, 200A per phase, 5 wire. Stage Right.

Instruments

56 - Ellipsoidal (ETC Source Four Ellipsoidal, HPL575/115X) Various Degree

30 - PAR (ETC Source Four PAR-EA, HPL575/115X) (VN5P, NSP, MFL, WFL lenses)

6 - 3 Cell Giotto MK2 1000W Cyc Light

Follow Spots

2 - Super Clubspot - Located at back of house near lighting/sound booth, 18' above stage. 100' throw to proscenium.

Stage Electrics

4 - 60' stage electrics, 20-20Amp circuits, paired, each electric.

Front of House Hang Position (1)

Front of catwalk - 20-20Amp circuits, paired. 40' to proscenium line, 27 degree angle.

Gel/Gobo

House supply limited. If gel or gobos are required, sufficient notice (4 weeks) must be given for the house to obtain them at the user's expense or the user must supply them.

Sound:

Sound System

32-channel, 4 sub-group Allen & Heath mixing console
4 monitor sends to stage

Sends to assistive listening system and commons/lobby area

Tascam CD/Flash recorder

Tascam CD player with iPod dock

House Left/Right clusters - JBL 15" 2-way cabinet with JBL 18" subwoofers

Center voice cluster - 2) JBL mid/high boxes with 1) JBL 15" low frequency cabinet

Feeds to light booth, band, lockers, vocal rooms with cast call and intercom

Cast call from stage left rack only

Full microphone patching system with inputs down stage left/right and upstage left/right with additional floor boxes left/right/center ahead of proscenium wall

2 - UHF Shure wireless microphones with lapel and earset microphones

Quick system running automatic mixing with one wireless lapel/handheld microphone, 4 microphone inputs in floor boxes. Controlled via touchpanel from stage left rack.

Intercom System

2-channel intercom system to all production areas, i.e. light booth, follow spot, catwalks, backstage and support areas and sound operator.

Video System Presentation System

6,500 lumens hi-def projector

Full digital and HDCP support

On-stage computer/video inputs

Blue-Ray player

Touch panel control

Smart podium with document camera, DVD player, annotation capabilities and computer/video inputs

Video Recording and Conferencing system

3 - Sony hi-def cameras with remote pan/tilt/zoom

Panasonic digital video switcher

Data video computer graphics generator

Black Magic Designs H.264 pro recorder

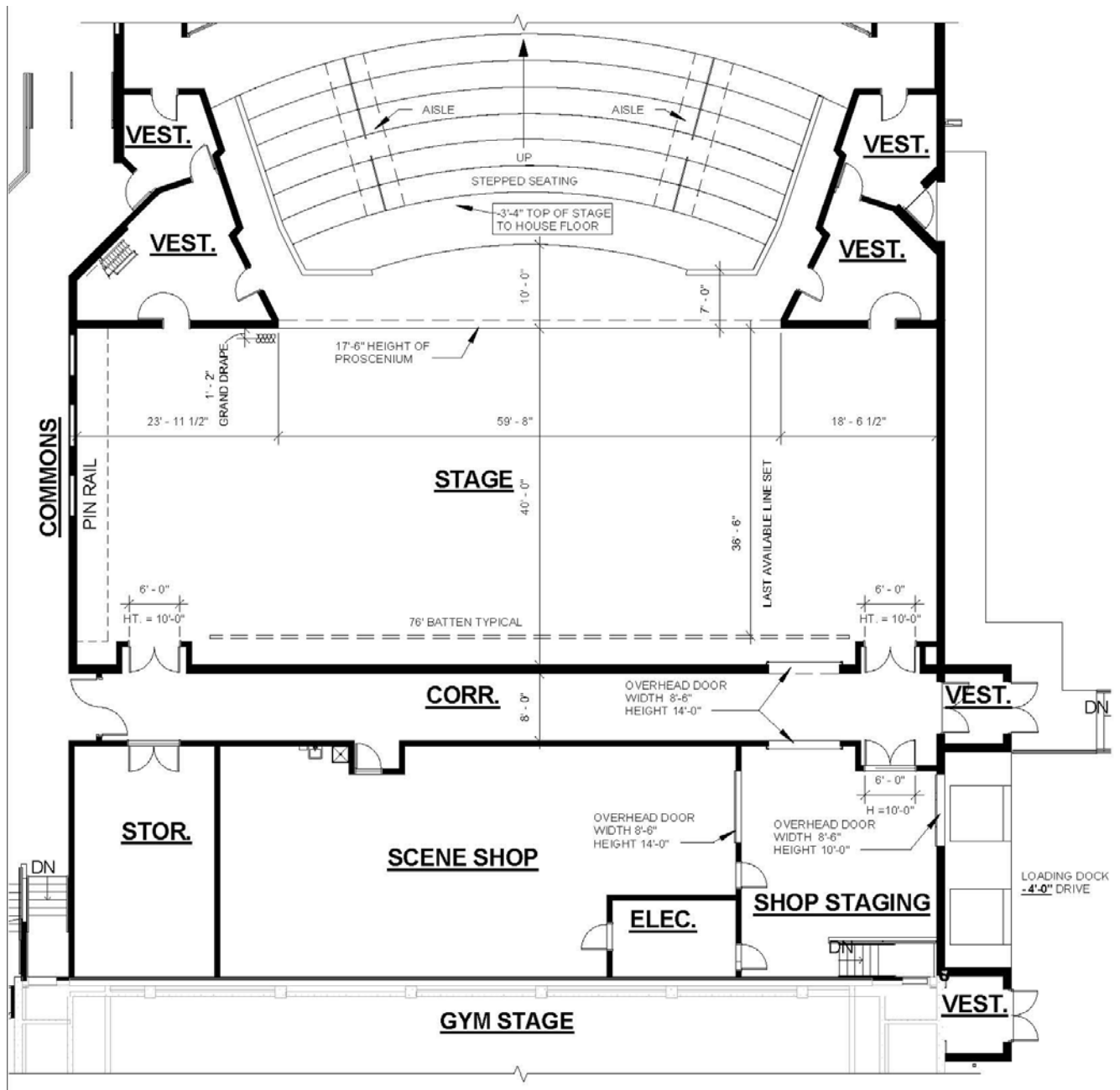
Video Conferencing via HP computer with viewcast streaming card.

Note:

Coordinate all equipment, access and space requirements with the theater. Existing equipment is subject to change and availability may be limited.

The Alliance High School Performing Arts Center Specs

Stage Plan Schematics:
 - Not to scale -



The Alliance High School Performing Arts Center Specs

LINE SET NO.	DISTANCE FROM PROSCENIUM TO CENTERLINE	DESCRIPTION	ARBOR CAPACITY	CURTAINS
1 2 3	0' - 8" 1' - 2" 1' - 10"	GRAND VALANCE GRAND DRAPE STAGE BATTEN #1	1,609 lbs 1,609 lbs 1,609 lbs	5' H x 70' W; 25 oz velour-INK BLUE 19'-3" H x 36' W (2); 25 oz velour-INK BLUE
4a 4 5	2'-6" 3' - 2" 5' - 2"	ELECT. CRADLE 1st ELECTRIC LEGS #1	782 lbs 2,086 lbs 1,609 lbs	19'-3" H x 6' W; 19'-3" H x 10' W on Roto Draper; 21 oz velour-BLACK
6 7 8	6' - 6" 7' - 2" 7' - 10"	STAGE BATTEN #2 BOARDER #1 SPEAKERS CURTAIN	1,609 lbs 1,609 lbs 1,609 lbs	6' H x 74' W; 21 oz velour-BLACK 19'-3" H x 39' W (2); 21 oz velour-BLACK
9 10 11a 11	8' - 6" 9' - 2" 10'-6" 11' - 2"	STAGE BATTEN #3 STAGE BATTEN #4 ELECT. CRADLE 2nd ELECTRIC	1,609 lbs 1,609 lbs 782 lbs 2,086 lbs	
12 13	13' - 2" 14' - 6"	LEGS #2 BOARDER #2	1,609 lbs 1,609 lbs	19'-3" H x 6' W; 19'-3" H x 10' W on Roto Draper; 21 oz velour-BLACK 7' H x 74' W; 21 oz velour-BLACK
14 15 16	15' - 2" 15' - 10" 17' - 2"	STAGE BATTEN #5 STAGE BATTEN #6 STAGE BATTEN #7	1,609 lbs 1,609 lbs 1,609 lbs	
17 18 19a 19	18' - 6" 19' - 2" 20'-6" 21' - 2"	STAGE BATTEN #8 MID STAGE CURTAIN ELECT. CRADLE 3rd ELECTRIC	1,609 lbs 1,609 lbs 782 lbs 2,086 lbs	19'-3" H x 39' W (2); 21 oz velour-BLACK
20 21	23' - 2" 23' - 10"	STAGE BATTEN #9 STAGE BATTEN #10	1,609 lbs 1,609 lbs	
22 23 24	24' - 6" 25' - 2" 25' - 10"	STAGE BATTEN #11 BOARDER #3 STAGE BATTEN #12 -SCRIM	1,609 lbs 1,609 lbs 1,609 lbs	7' H x 74' W; 21 oz velour-BLACK 19'-3" H x 66' W; Sharktooth – Lt. Grey
25 26a 26	27' - 2" 28'-6" 29' - 2"	LEGS #3 ELECT. CRADLE 4th ELECTRIC	1,609 lbs 782 lbs 2,086 lbs	19'-3" H x 6' W; 19'-3" H x 10' W on Roto Draper; 21 oz velour-BLACK
27 28 29	31' - 2" 31' - 10" 33' - 8"	STAGE BATTEN #13 STAGE BATTEN #14 BOARDER #4	1,609 lbs 1,609 lbs 1,609 lbs	7' H x 74' W; 21 oz velour-BLACK
30 31 32	34' - 4" 35' - 0" 35' - 8"	STAGE BATTEN #15 STAGE BATTEN #16 REAR CURTAIN	1,609 lbs 1,609 lbs 1,609 lbs	19'-3" H x 39' W (2); 21 oz velour-BLACK
33	36' - 6"	CYCLORAMA	1,609 lbs	19'-3" H x 66' W; Muslin - White